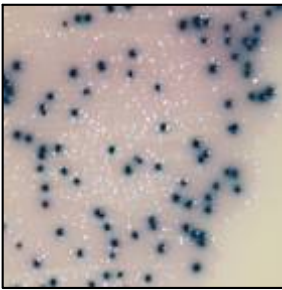


COLOR REFERENCE CHART

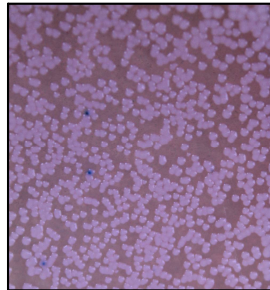
The following is a pictorial representation of common bacteria identified by the MultiChrome™. Some bacteria may look slightly different than those shown in these pictures due to inoculation techniques, but the colors will be consistent and unique to each bacteria detected.

For more examples please visit our website at www.kaceydiagnostics.com under "Microbiology". Scroll down to the reference section on the page and click on the "Case Study Reference Library" link.

Gram Positive



GP Strep
(dark blue)



GP Staph
(creamy pink)

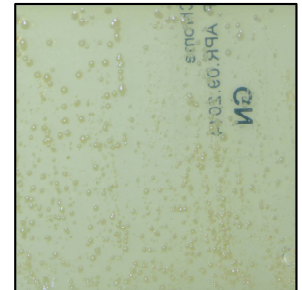


GP Enterococci
(diffuse dark blue)

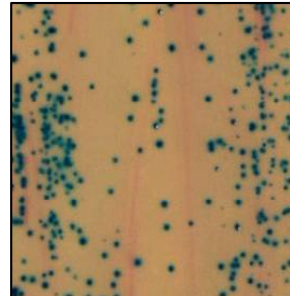
Gram Negative



GN E.coli
(rose color)



GN Pseudomonas
(yellow color, acrid smell)



GN Klebsiella
(dark blue)



GN Proteus
(brownish yellow)

Commonly found area specific bacteria:

EAR:

- 1) Staphylococci
- 2) Pseudomonas
- 3) Proteus
- 4) E. coli
- 5) Enterococci
- 6) Streptococci

UTI:

- 1) Staphylococci
- 2) Proteus
- 3) E. Coli
- 4) Klebsiella
- 5) Enterococci
- 6) Pseudomonas (occasionally)

Skin/Wound:

- 1) Staphylococci
- 2) Streptococci
- 3) Pseudomonas
- 4) Enterococci
- 5) Proteus



KACEY
DIAGNOSTICS

1854A Hendersonville Rd, Suite 112

Asheville, NC 28803

Ph 828-685-3569

www.kaceydiagnostics.com

Bacterial pathogen probability charts for Canine and Feline: These reference charts suggest the highest and lowest percentage for infection of various parts of the body by common pathogenic bacteria. Once identified, you can proceed with accepted antibiotic protocols for treatment of pathogens or run an antibiotic sensitivity with the Kacey SensiRing™ system for a complete Culture and Sensitive in-house.

Species: Canine **Percentage Probability**

Bacteria	UTI	Ear	Bone	Skin	Genital	Wound	Blood	URI
Staph Intermedius	10-15%	25-30%	40-50%	60-70%	15-25%	25-35%	25-35%	30-35%
E. Coli	>50%	10-20%	10-20%	20-30%	30-35%	20-30%	35-45%	15-20%
Enterococcus faecalis	<10%	NGS	10-20%	NGS	NGS	NGS	NGS	NGS
Proteus mirabilis	15%	20-25%	10-20%	<10%	NGS	10-20%	NGS	NGS
Obligate anerobes	NGS	NGS	NGS	NGS	NGS	25-35%	10-20%	NGS
Pseudomonas	NGS	15-25%	NGS	<10%	<10%	10-20%	10-20%	<10%
Klebsiella	10-15%	NGS	NGS	NGS	NGS	NGS	20-35%	<10%
Pasturella	NGS	NGS	NGS	NGS	10-25%	NGS	NGS	15-20%

NGS= Not Generally Seen

Species: Feline **Percent Probability**

Bacteria	Conjunctival	Genital	UTI	Wound	URI	Skin
Pasturella	10-20%	15-25%	10-15%	30-40%	>50%	>50%
E. Coli	NGS	30-35%	40-45%	10-20%	15-20%	20-30%
Proteus mirabilis	NGS	NGS	10-15%	<10%	<10%	<10%
Pseudomonas	NGS	<10%	<10%	NGS	<10%	NGS
Obligate anerobes	NGS	10-25%	NGS	25-35%	NGS	NGS
Klebsiella	NGS	NGS	NGS	NGS	NGS	NGS
Chlamydia psittoci	50-75%	NGS	NGS	NGS	NGS	NGS
B-hemolytic strep	15-25%	NGS	NGS	NGS	NGS	NGS

NGS= Not Generally Seen

Probability reference charts taken from “Target: The Antimicrobial Reference Guide to Effective Treatment”, second edition, revised. Author: Dr. David Aucoin, DVM, Diplomate of the American College of Veterinary Clinical Pharmacology. Date on file, Kacey® Asheville, NC 28801

